



**BARNHART CRANE &
RIGGING COMPANY**

NEWS FROM

Bama • Midwest

Jackson • Texas

Page 2

MEN & MACHINES

Page 3

TOMMY EMERSON

MEMORIAL

SCHOLARSHIP

Page 3

TURN-KEY

TRANSPORTATION

FROM LA TO IL

Page 4

SAFETY TIPS

Page 4

ON THE HOOK

Upcoming projects

Page 5

ROLLING BACK

IN TIME

Page 5

THE LIFTING LETTER

1 9 9 9 F I R S T E D I T I O N

A P U B L I C A T I O N O F B A R N H A R T C R A N E & R I G G I N G C O M P A N Y



IT'S A SUPER LIFT

Barnhart Crane & Rigging Co. recently utilized its Demag TC3000 equipped with its Super Lift attachment to erect a crude tower at a local refinery. The crude tower was 150' tall, 15' in diameter, and weighed 300 tons. The tower was unloaded using Ichabod, Barnhart's 1250-ton stiff leg derrick located on the Mississippi River in Memphis, and transported the tower in 3 sections to the refinery using hydraulic platform trailer.



T E X A S

Our TC-1200 Demag (308 ton cap.) was recently used by Barnhart crews in upending 160 ton HRSG modules at a N. Texas power project. Under a turn-key contract, Barnhart unloaded from rail, hauled and set the 12 modules for a major power contractor.



B A M A

North Alabama recently moved a rocket test facility from Alabama to Mississippi.

◀ The 470,000-pound vessel is loaded on the barge ready for transport to Mississippi.

◀ Here the vessel rides on our Goldhoffer trailer heading towards its new home.



M I D W E S T

A Chicago based contractor, recently called on Midwest team to assist them in the erection of seven, 110'H Stacks at a new Steel Mill in Southern, IN. The stacks were set at a radius of up to 192' and required our 440-Ton Demag HC1010 truck crane equipped with 177' of luffing jib.



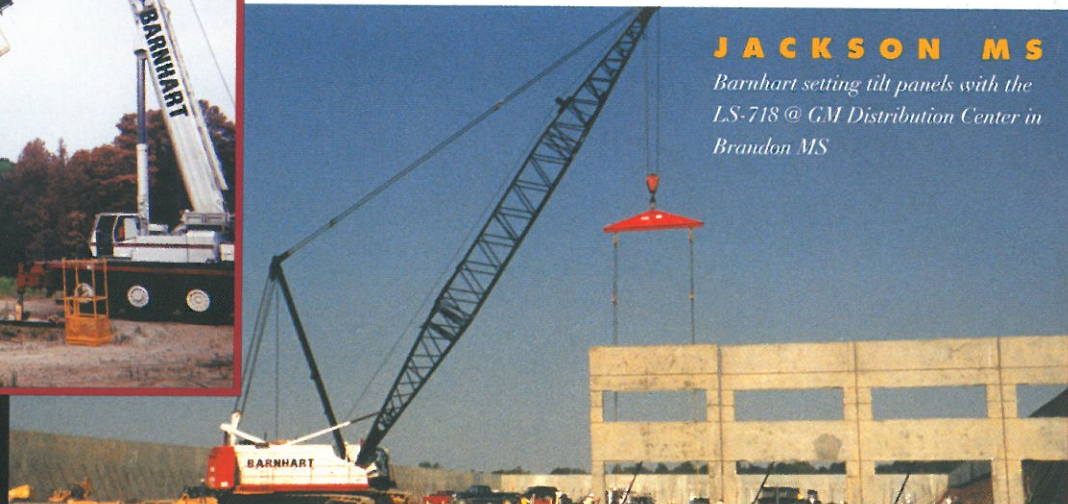
B A M A

◀ The North Alabama crew is lowering the flare stack using our 130 ton Krupp truck crane and Taylor forklift.

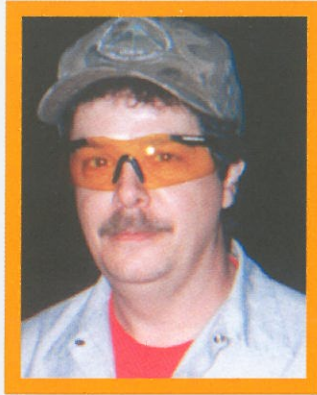


J A C K S O N M S

Barnhart setting tilt panels with the LS-718 @ GM Distribution Center in Brandon MS



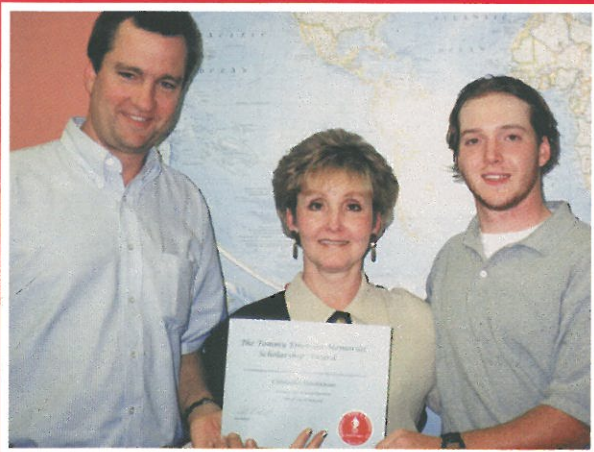
MEN & MACHINES



This issue, we profile a key team member who is not usually seen at the job site, but his work creations are present nonetheless. While our customers may not recognize the face of Ray Swann, his handiwork has been seen in photos in national magazines and our advertising. Ray is the Foreman of our Fabricating Shop and has been responsible

for building much of the custom hauling and lifting equipment that Barnhart utilizes. Whether the job involved a Lift Tower for a project in South America or a temporary bridge for a large generator-hauling project, it started as raw metal and CAD drawings on Ray's shop floor. His responsibilities including fabrication and welding to AWS codes. But not only has Ray supervised the building of many of Barnhart's exotic machines, he is an accomplished shutterbug. Not only has the equipment he has built been the subject of many photos, many of the photographs themselves have been Ray's handiwork.

Ray is a native of Columbus, IN and moved to Bartlett, TN at age 14. He has worked in the fabrication and erection industry for over 20 years. When he is not working on rush projects, he enjoys fishing and hunting. He has a wife of 20 years and two children who tolerate his hectic working schedule.



Congratulations go to Christopher Hendrickson, son of Ms. Linda Totty, for being the first recipient of the Tommy Emerson Memorial Scholarship. The annual college scholarship award of \$2000 was established in memory of Tommy Emerson to honor his significant contributions and service to this company. Mr. Emerson died in April of cancer. For information concerning student eligibility and selection criteria contact Brent Akin in Human Resources.

SAFETY TIPS



PERSONAL PROTECTIVE EQUIPMENT

PPE or personal protective equipment is a part of everyday life in our business. But it is also a safety factor that a lot of people tend to forget the most. Lets take for example the following.

When you were born the good lord gave you 5 basic senses. Do you know what they are? Sight, Hearing, Taste, Touch, and Smell.

Suppose you were faced with the decision to have to give one, two, or three of them up due to an accident on the job from not using your PPE. This would be a very hard thing to decide on because if you think of it every part of your every day life is surrounded by these senses in everything you do. You are depended on them at work, home, playing with the kids, traveling, the list is endless. Yet they are taken for granted until it's too late. This is why as safety supervisors, team leaders, foreman, working partners, managers, owners and so on we must take the time to train and reinforce the importance of personal protective equipment and safety on every job, every day. "No excuses", "No exceptions".

It may seem like a lot of trouble but remember when you are old, retired and sitting on the porch, reminiscing you will think. I saw my children grow up and heard their laughter. I touch the softness of my new grandchild, I tasted the great food my wife had just cooked, and last of all was still around to smell the roses. Safety lasts a lifetime.

Terry Smith
Safety Director



Barnhart's heavy transport team provided turn-key transportation of critical press components from the Port of New Orleans to the owner's door in Morris Illinois. Using our 60' barge ramps and nine lines of Goldhofer trailer, Barnhart made easy work of transporting five heavy pieces form barge to the owner's plant including "jumping" the historic Illinois & Michigan canal.



ON THE HOOK



A GLANCE AT UPCOMING PROJECTS

From Fabricator to Foundation

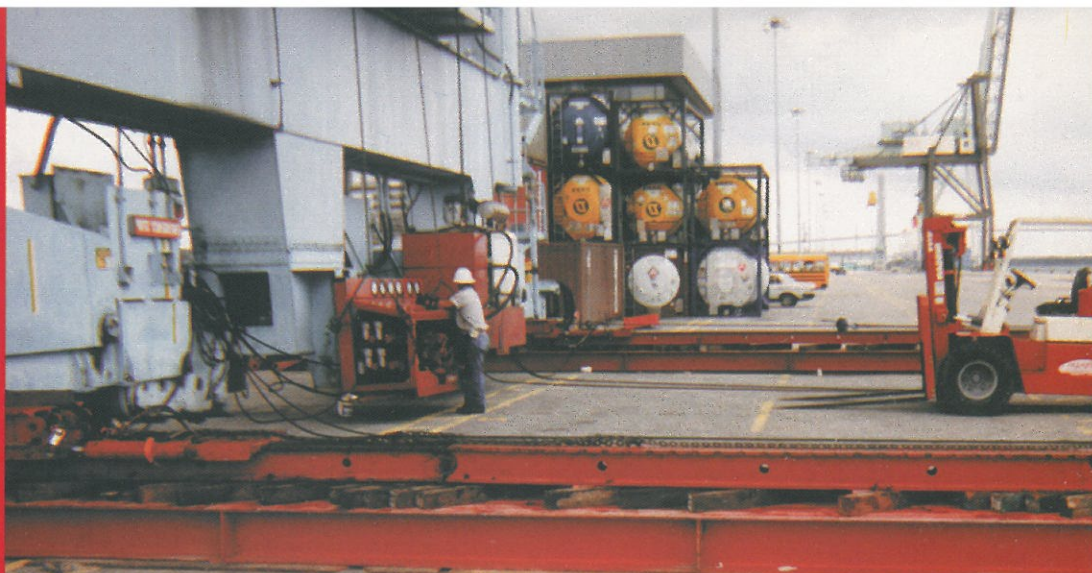
Land to barge to land transport to unload and set of 200' tall, 16' diameter, 300-ton process vessel at local refinery.

The Pressure is on

Replacement of High Pressure Stripper and Condenser at a Fertilizer plant in Georgia. Project includes use of TC-3000 800-ton truck crane and (2) 130-ton strand jacks. Barnhart will also perform the necessary steel modifications and transportation of old and new vessels.

Haul & Set 21 units

Barnhart has been awarded a single contract to haul and set 21 gas turbine and generator units at four sites in the Mid South. Beginning this fall, Barnhart crews will unload from rail, haul over public roads and place onto foundation nearly 60 components (weighing up to 210 tons) for the 4 generating plants. The hauling will require repeated use of temporary bridge jumping equipment and the installation of a complete by-pass bridge to haul the large components over creeks currently spanned by 15-ton limit bridges. This is the fourth contract award to Barnhart in two years by the nationally recognized power contractor.



Rolling back in time

Changing needs at the Port of Jacksonville recently required repositioning of two large Container Cranes. Moving a 160' tall top-heavy structure weighing 1000 tons would be challenge enough, but the port's busy schedule would allow only a weekend for the movement of each crane. Using the latest in hydraulic jacking and sliding equipment, Barnhart raised one crane and moved it back from the dock 200' while other cranes were rolled past. Barnhart then moved the crane back to position and lowered it onto the tracks—just in time.



HYDRAULIC CRANES **MODEL NO.** **BOOM**

500 Ton Liebherr All-Terrain	LTM 1400	440'
440 Ton Demag Truck Crane (2)	HC 1010	348'
180 Ton Demag All-Terrain (2)	AC 435	219'
165 Ton Demag All-Terrain (2)	AC 335	302'
150 Ton Demag All-Terrain	AC 395	253'
100 Ton Demag All-Terrain	AC 205	219'
150 Ton Krupp All-Terrain (3)	KMK 5100	227'
110 Ton Krupp All-Terrain	KMK 5110	214'
110 Ton Liebherr All-Terrain	LTM 1090	215'
225 Ton Liebherr All-Terrain	LTM 1160	364'

83 Ton Demag Truck Crane	HC 190	175'
80 Ton Krupp All-Terrain (2)	KMK 4070	175'
65-60 Ton Truck (4)	-	186'
50-30 Ton Grove Truck (8)	-	142'
22 Ton Grove All-Terrain/Truck (3)	AT 422	113'
17-14 Ton Boom Truck (3)	-	118'
81/2 Ton Broderson Carry Deck Crane (4)	-	37'

CRAWLER CRANES **MODEL NO.** **BOOM**

360 Ton Link-Belt Heavy-Lift Crane	LS 718 HL	480'
250 Ton Link-Belt Crawler Tower Crane (2)	LS 718	550'
250 Ton Link-Belt Crawler Crane (2)	LS 718	450'
350 Ton Demag Crawler Crane	CC2000	433'

CONVENTIONAL CRANES **MODEL NO.** **BOOM**

800 Ton Demag Truck Crane with SuperLift	TC 3000SL	496'
550 Ton Demag Truck Crane	TC 3000	496'
440 Ton Demag Truck Crane with SuperLift	TC 1200 SL	472'
308 Ton Demag Truck Crane	TC 1200	472'
200 Ton Link-Belt Truck Crane	HC 258	370'
125 Ton Link-Belt Truck Crane (3)	HC 238	300'
115 Ton Lorain Truck Crane	-	240'
75 Ton Link-Belt Truck Crane	HC 138/A	240'



ROUGH TERRAIN CRANES **MODEL NO.** **BOOM**

80 Ton Grove RT Crane (2)	RT 980	172'
40-35 Ton RT Cranes (6)	-	143'
22-18 Ton RT Cranes (4)	-	115'
15-14 Ton RT Cranes (5)	-	90'
8-2 Ton Carrydeck Cranes (5)	-	45'

HEAVY LIFTING, MOVING & SLIDING

Forklifts to 80,000 lbs. with hydraulic booms	Air Bags to 500 Tons
20-650 Ton Hydraulic Gantries	1000 Ton Sliding System
2400 Ton Jacking System	3200 Ton Strand Lift System

BARGE UNLOADING

TRANSPORTATION SERVICES

48 State Trucking Services to 150,000 lbs. most states
 28 Tractors and 70 Trailers - Floats, Single Drops, Double Drops to 3-axle
 Stretch Trailers, Air Ride Trailers, Tank Trailer to 16' diameter, 4-axle Trailers to 250 tons
 Over 1200 Tons of Hydraulic Platform Trailer with 4 Prime Movers
 Barge and Rail Loading and Securement
 Dolly Transporters to 700 Tons
 30 Lines of Goldhofer Trailer
 11 Lines of Nicolas Trailer

MISCELLANEOUS EQUIPMENT

Spreader Bars, Test Weights, Man Baskets, Concrete Buckets, Snatch Blocks,
 Crane Mats, Welding Machines, Air Compressors, Barge Ramps to 400 Tons

30 LINES OF GOLDHOFER TRAILER

Available in multiple combinations and configurations.



12 lines/403 tons

24 lines/806 tons



2550 Channel Avenue • Memphis, TN 38113 • 901-775-3000 • 800-727-0149 • fax 901-775-2992
 731 Finley Island Road • Decatur, AL 35601 • 205-355-5531 • 800-830-4260 • fax 205-355-2091
 8216 Arch Street Pike • Little Rock, AR 72206 • 501-570-0700 • 800-543-2318 • fax 501-570-0304
 246 N. Pearson Road • Pearl, MS 39208 • 601-664-3005 • 800-394-8652 • fax: 601-664-3077
 web page: www.barnhartcrane.com • e-mail: 105144.633@compuserve.com

